

YOUR INNOVATIVE PARTNER FOR STEEL PRECAST MOULDS AND IN SITU FORMWORK





INDEX | Precast

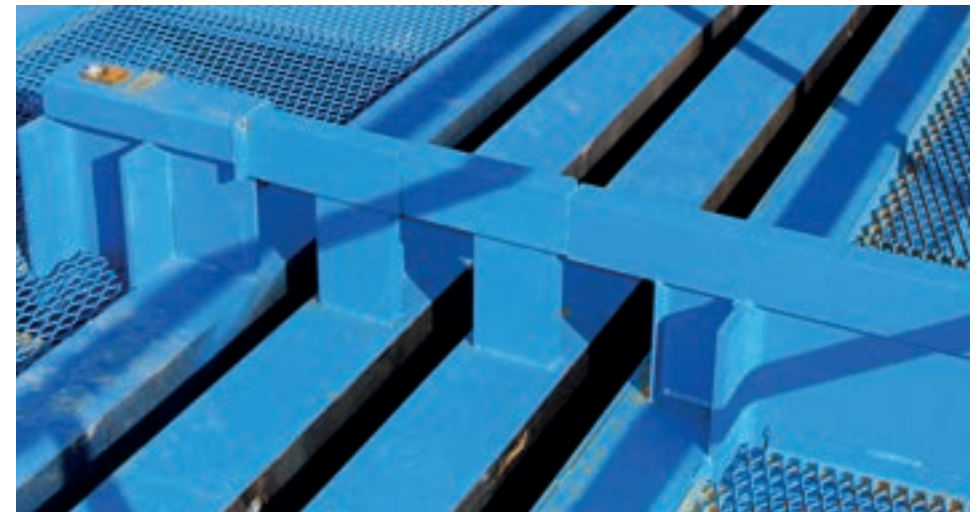
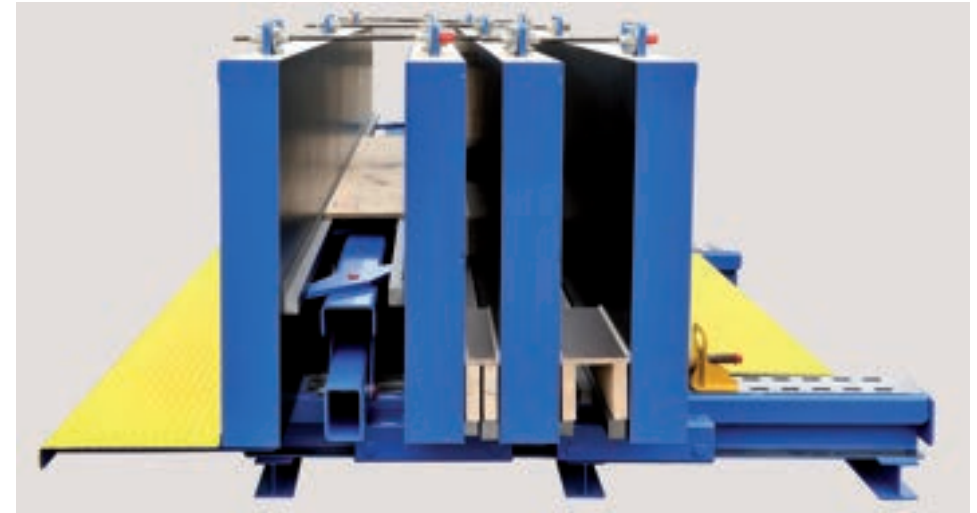
Battery moulds	6	Retaining walls	42
Automated production systems	8	Stacking blocks	46
Columns	16	Tilting tables	48
Beams	20	Cabins	54
Drains/manholes	28	Wind turbine elements	62
Pile moulds	32	Miscellaneous handling	64
Pre-stress and release equipment	36	Miscellaneous moulds	66
(Pre-stressed) floor slabs	38		

Hendriks precon specialises in steel moulds for the precast concrete industry. For decades we have been designing, manufacturing and assembling moulds in all shapes, sizes and quantities. Our products range from moulds for retaining walls to bridge deck girders, and from prison cells to floor slabs. If required, we can deliver integrated pre-stressed tables with manual or fully hydraulic operation. The innovative solutions and the high quality of the concrete surface mean Hendriks is your ideal partner.

BATTERY MOULDS | Precast

PRODUCT INFORMATION:
AVAILABLE IN VARIOUS LENGTHS
AND HEIGHTS.

Battery moulds are ideal for the production of walls and beams. The moulds consist of a solid base frame onto which a “fixed” panel and several moveable side panels are positioned. Depending on their dimensions, the panels can be moved manually, mechanically or hydraulically. The ends can be secured in a number of different ways, including with magnets. The formwork base can be constructed in wood or steel. Various safety devices contribute to improved safety during all phases of production.



PRODUCT INFORMATION:
WALLS CAN BE ADDED.



PRECAST

AUTOMATED PRODUCTION SYSTEMS | Precast

PRODUCT INFORMATION:
AUTOMATED PRODUCTION
OF CONCRETE FLOORS
'TWO-SIDED SMOOTH'.

All automatic production systems are custom designed. Depending on the product to be produced, the correct and optimal techniques are used to enable cost-effective production. Both turn-key, integral systems and sub-systems are designed according to customer requirements.



PRODUCT INFORMATION:

MANIPULATOR FOR INSPECTION DOUBLE SIDED TABLES. AND MANIPULATOR FOR DEMOLDING FLOOR ELEMENTS.



PRECAST

PRODUCT INFORMATION:
LONGITUDINAL TRANSPORT
AND CROSS TRANSPORT.

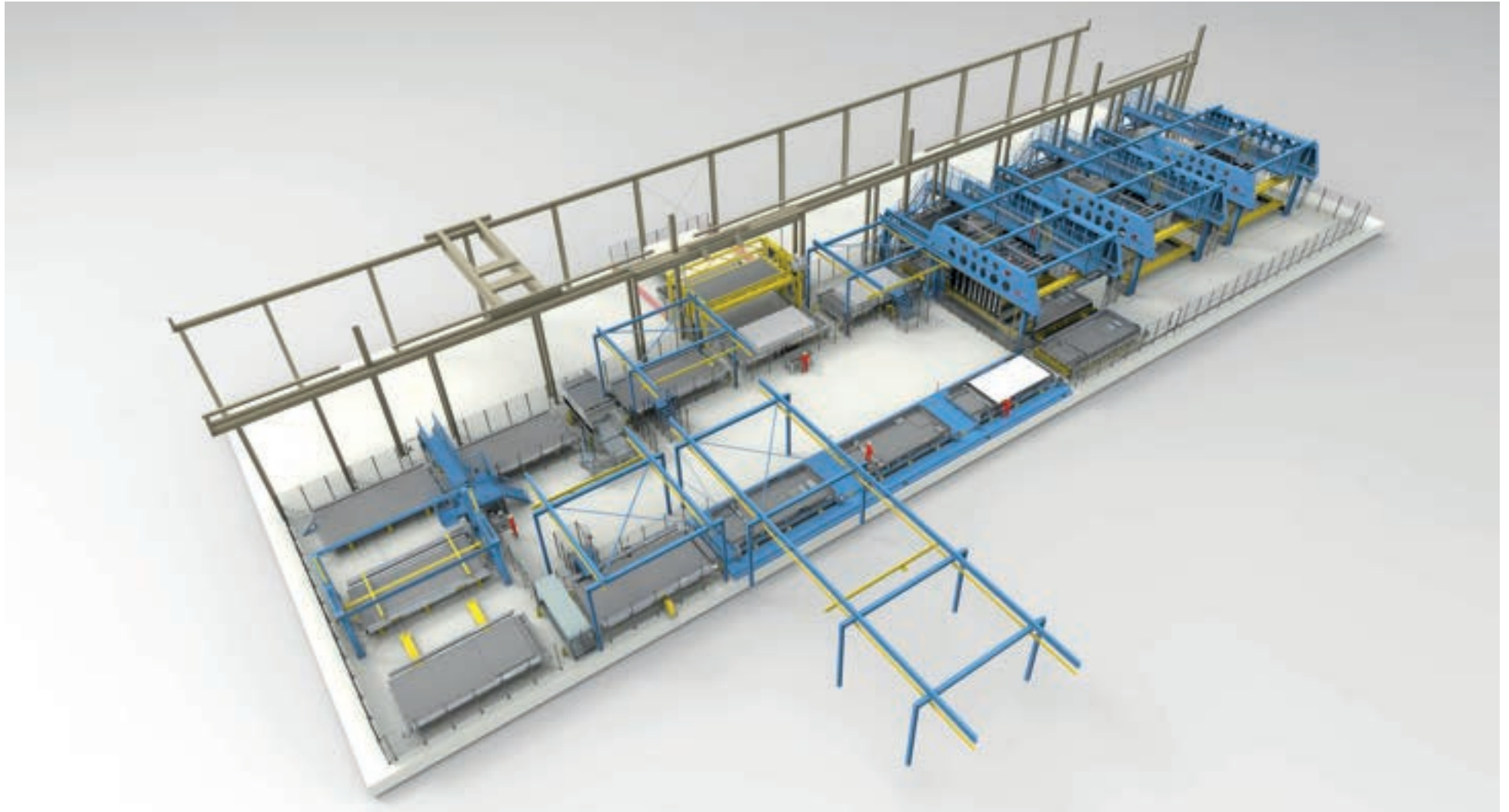


PRODUCT INFORMATION:
AUTOMATIC CLOSING AND
OPENING OF SIDE PANELS.



PRECAST

PRODUCT INFORMATION:
HORIZONTAL PREPARING AND VERTICAL
POURING IS A PERFECT COMBINATION
OF A HIGH QUALITY CONCRETE PRODUCT
WITH LOW PRODUCTION COSTS.

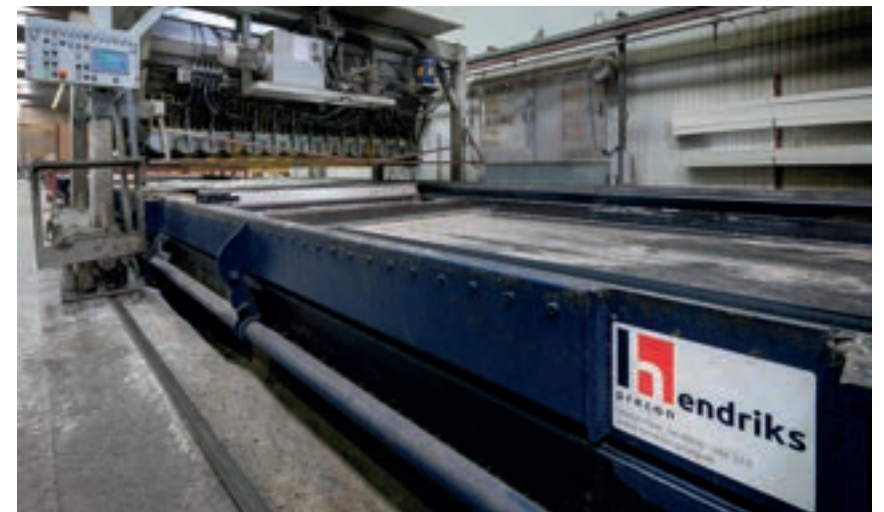


PRODUCT INFORMATION:
LONG TABLES FOR FLOOR SLABS.



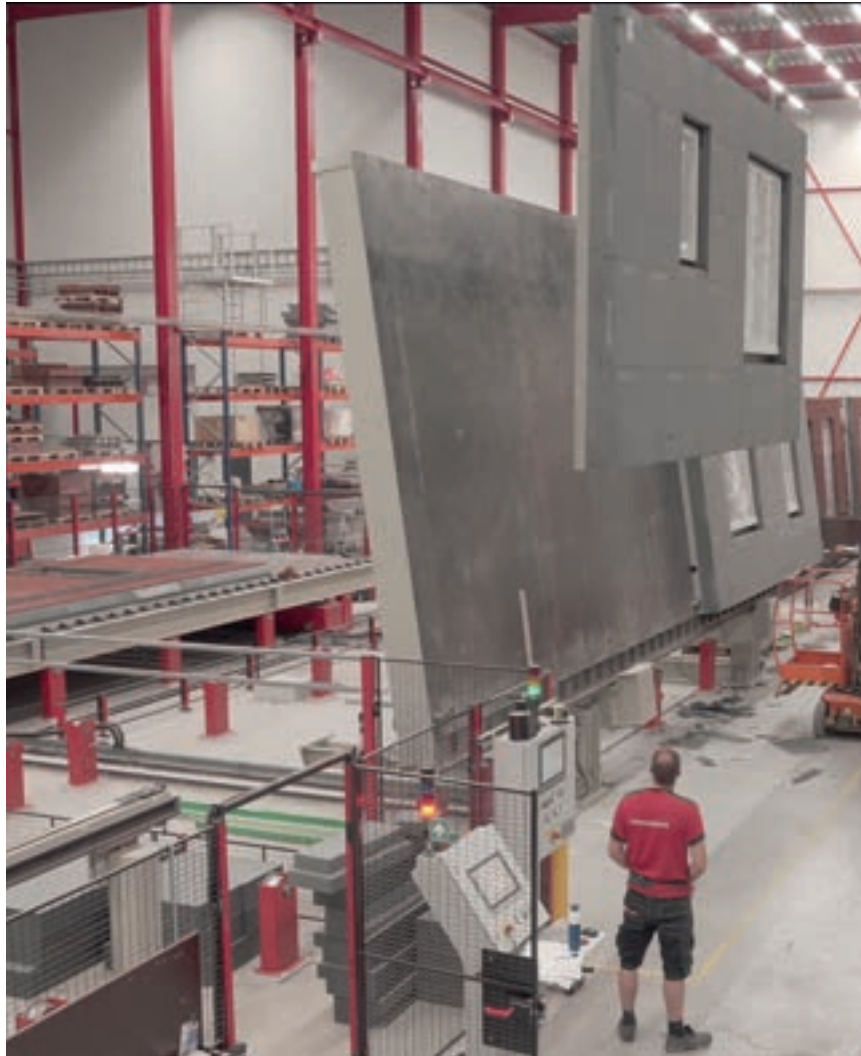
PRECAST

PRODUCT INFORMATION:
CARROUSEL SYSTEM FOR PRODUCTION
OF FAÇADE ELEMENTS WITH BRICK SLIPS.



PRODUCT INFORMATION:

AUTOMATIC PLACEMENT OF BRICK SLIPS
ON PRECAST ELEMENTS, WITH AUTOMATIC
TRANSPORTS AND TILTING TABLE.



PRECAST

COLUMNS | Precast

Precast columns are used in all sectors of construction. The moulds can be supplied in a wide variety of shapes and sizes, and guarantee high quality production. Also in special shapes, such as a viaduct in Montpellier, where the supports have been made to resemble trees and branches.

PRODUCT INFORMATION:

SPECIAL CONCRETE SHAPES, ORGANICALLY FORMED 'TREE-TRUNK WITH BRANCH'.



PRODUCT INFORMATION:
USED AT VIADUCT NEAR MONTPELLIER (FRANCE).



PRECAST

PRODUCT INFORMATION:
'MUSHROOM' COLUMN PROJECT 'THE ENTREE'
AMSTERDAM AND 'K' COLUMN FOR LIEGE
STATION, DESIGNED BY CALATRAVA.



PRODUCT INFORMATION:
THE ENTREE' AMSTERDAM.



PRECAST

BEAMS | Precast

PRODUCT INFORMATION:
BEAM PRODUCTION PROJECT GHENT.

There are various options for producing beams efficiently and economically. Besides specific shapes such as I, H, TT, we can also supply universal moulds that use cassettes to produce H, I, hollow sections and edge beams. The width and height are adjustable. Controlling and closing the mould are conducted fully hydraulically. Special solutions are also available for the production of curved hollow-section beams. Ease of operation and short conversion times are in all cases key principles.



PRODUCT INFORMATION:
SECTION OF LIGHT RAIL THE HAGUE,
VARIATION IN LENGTH AND RADIUS.



PRECAST

PRODUCT INFORMATION:
CURVED BEAM
'SPOREN DEN BOSCH' PROJECT



PRODUCT INFORMATION:
'CAST IN PLACE BEAM' FOR SOLID BRIDGE DECKS.



PRECAST

PRODUCT INFORMATION:
VARIABLE BEAM MOULD WITH 20,000 KN
PRESTRESS EQUIPMENT.



PRODUCT INFORMATION:
45 M LONG 'H' BEAM. PROJECT RAMSPOL.



PRECAST

PRODUCT INFORMATION:
HEIGHT ADJUSTABLE I-BEAM MOULD FOR
JOURS INTERSECTION PROJECT.



PRODUCT INFORMATION:
PRODUCTION OF PRESTRESSED ROOF ELEMENTS.



PRECAST

DRAINS/MANHOLES | Precast

PRODUCT INFORMATION:
MOULD FOR DRAINAGE OUTFLOWS AND
DRAINAGE CHANNELS.

The pit moulds with a “fixed” inner core can be supplied in sizes to meet customer specifications. Interchangeable flow profile heads allow for flexibility in designs. Flow profile heads are available in “end”, 90 degrees, “X”, “T” and straight designs. Each model is available in a range of diameters. Angle rotating elements make angled connections possible.



PRODUCT INFORMATION:
MOULDS FOR ROUND AND SQUARE SEWER
WELLS WITH FLOW PROFILES.



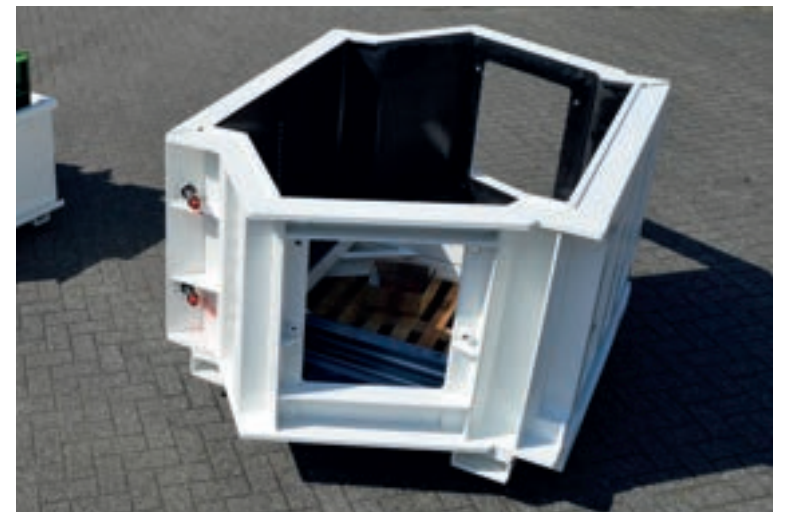
PRECAST

PRODUCT INFORMATION:
MOULDS FOR UNDERGROUND WASTE
CONTAINERS, FULLY AUTOMATIC CONTROL.



PRODUCT INFORMATION:

WASTE CONTAINER AND DRAIN MOULD WITH VARIOUS PARTS FOR DIFFERENT ANGLED CONNECTIONS TO THE DRAIN JUNCTION.



PRECAST

PILE MOULDS | Precast

PRODUCT INFORMATION:
PRESTRESSED PILE PRODUCTION.

We have two types of pile moulds: “fixed” dimensions in smaller sizes and adjustable moulds for sizes ranging between 290 and 500 mm.

Both variants can be supplied complete with the pre-stress system that comprises hydraulic cylinders.

The fixed models allow the formwork to be removed using the so-called “ice-cube system”; the larger cross-sections can be constructed in extremely fast conversion times, which means no pouring days are lost.



PRODUCT INFORMATION:
FORMWORK WITH SO-CALLED ICE-CUBE SYSTEM.



PRECAST

PRODUCT INFORMATION:
AS 'FIXED' MOULDS AND IN
ADJUSTABLE VERSION.



PRODUCT INFORMATION:
FIRST INSTALLATION FOR PRESTRESSED
PILE PRODUCTION IN UK.



PRECAST

PRE-STRESS AND RELEASE EQUIPMENT | Precast

PRODUCT INFORMATION:
PRESTRESS TABLES VARYING FROM
5,000 TO 20,000 KN.

Pre-stress beds for floors, beams and all kinds of precast cross-sections.
Capacity ranging from 3,000 to 25,000 kN including hydraulic equipment.
From manual operation to fully automatic, including certification of the beams,
which eliminates the need for separate control of the lengths.



PRODUCT INFORMATION:
PRESTRESS INSTALLATION FOR PILE MOULDS
AND TT BEAMS.

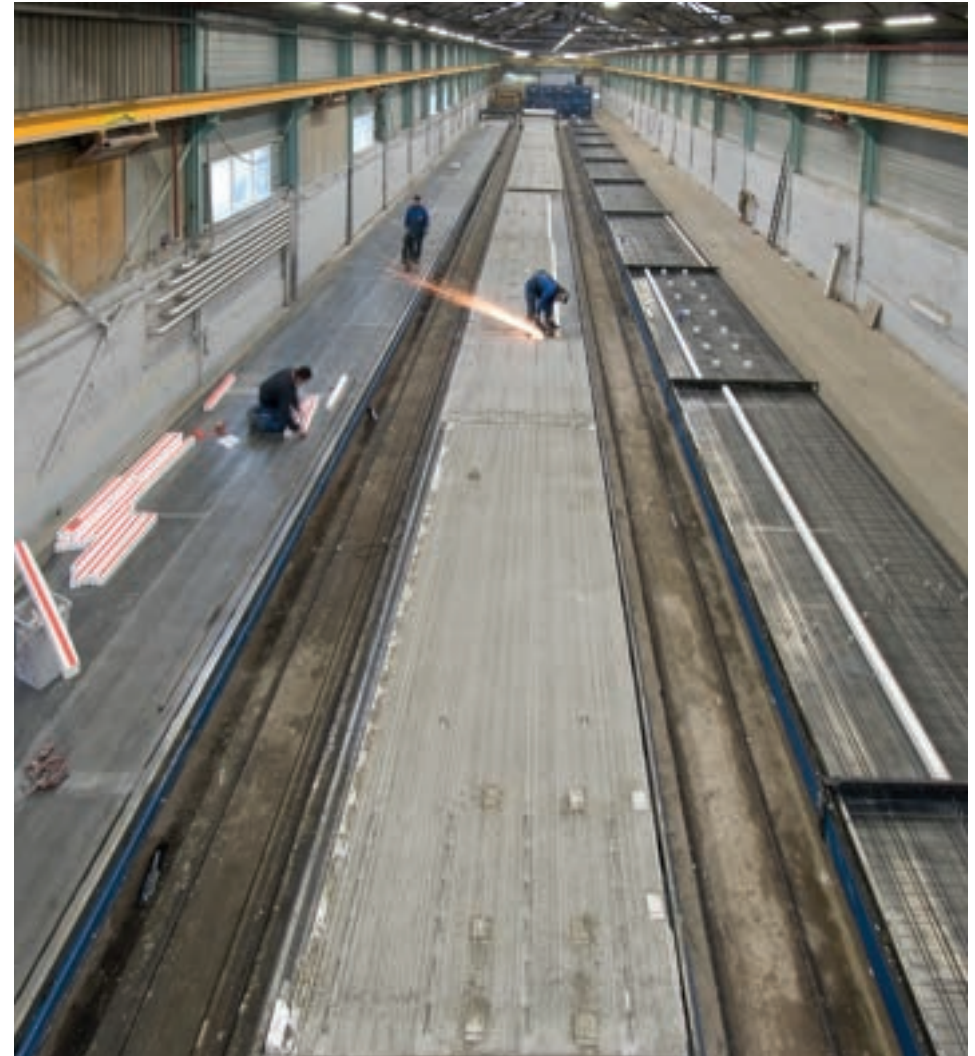


PRECAST

(PRE-STRESSED) FLOOR SLABS | Precast

PRODUCT INFORMATION:
PRODUCTION OF PRESTRESSED FLOOR SLABS.

There is a wide variety of designs of long beds, but what they all have in common is that flatness and the accurate positioning of the rails are of paramount importance. Heating the long beds is possible and there are various ways of achieving this, including contact heating.



PRODUCT INFORMATION:
PRODUCTION OF PRESTRESSED HOLLOW-CORE
BEAM FLOORS.



PRECAST

PRODUCT INFORMATION:
PRODUCTION OF PRESTRESSED FLOOR SLABS.



PRODUCT INFORMATION:
PRODUCTION OF PRESTRESSED FLOOR PLATES.



PRECAST

RETAINING WALLS | Precast

PRODUCT INFORMATION:
SEMI-AUTOMATIC RETAINING WALL MOULDS.

The moulds for the retaining walls are used in both the area of civil engineering and agriculture.
They come in versions from manual to fully automatic and anything in between.
Each mould is made to customer specifications.



PRODUCT INFORMATION:
MOULDS FOR RETAINING WALLS:
MANUAL, SEMI-AUTOMATIC.



PRECAST

PRODUCT INFORMATION:
SEMI-AUTOMATIC RETAINING WALL MOULDS.



PRODUCT INFORMATION:
RETAINING WALL MOULDS WITH FULLY
AUTOMATIC CONTROL.



PRECAST

STACKING BLOCKS | Precast

PRODUCT INFORMATION:
MOULDS FOR STACKING BLOCKS IN
VARIOUS DESIGNS.

Hendriks precast moulds for stacking blocks can be characterised in the same way as the finished product: robust, sound and versatile. The steel casting plate, which has solid bevelled edges, means the mould is dimensionally stable. Among other applications, stackable blocks can be used for temporary or permanent partitions, storage sheds, noise barriers and fire-resistant walls.



PRODUCT INFORMATION:
STACKING BLOCK MOULDS WITHOUT BASE.



PRECAST

TILTING TABLES | Precast

PRODUCT INFORMATION:
TILTING TABLES VARYING IN LENGTH
AND WIDTH.

Tilting tables for walls of varying dimensions and thicknesses. Hendriks precon tilting tables meet the strictest of standards for flatness and operational reliability. Lengths of up to 100 m and longer. The tables can also be constructed with height adjustable or fixed edging strips. Furthermore we offer an extensive range of magnetic strips.



PRODUCT INFORMATION:
TILTING TABLES WITH HEATING AND INSULATION.



PRECAST

PRODUCT INFORMATION:
TILTING TABLES FOR WALL PRODUCTION IN
HOUSE BUILDING.



PRODUCT INFORMATION:
TILTING TABLES, 32 M IN LENGTH FOR
PRODUCTION OF FRONT WALLS.



PRECAST

PRODUCT INFORMATION:
TILTING TABLES FOR PRODUCTION HOUSING
ELEMENTS (FLOORS AND WALLS), SIDE PANELS
EQUIPPED WITH HYDRAULICS.



PRODUCT INFORMATION:
EXTRA WIDE TILTING TABLES WITH VIBRATORS.



PRECAST

CABINS | Precast

PRODUCT INFORMATION:
CABIN MOULDS FOR HOUSING ELEMENTS.

Cabin moulds are available in “fixed” and flexible versions. You can opt for pouring into the position for use or “upside down”, which involves turning the elements over once the formwork has been removed. When manufacturing cabins with varying sizes, the speed of conversion plays a key role. Among other applications, the moulds are used for the construction of main distribution stations for the energy and telecom markets, prison cells and housing elements.



PRODUCT INFORMATION:

MULTIPLE CABINS IN VARYING LENGTHS, WIDTHS
AND HEIGHTS ON ONE PRODUCTION PLATFORM.



PRODUCT INFORMATION:
DOUBLE-BOX CULVERTS MOLDS EQUIPPED
WITH HYDRAULICS AND VIBRATORS.



PRODUCT INFORMATION:
DOUBLE-BOX CULVERTS WITH PROFILED
BOTTOM AND TOP.



PRECAST

PRODUCT INFORMATION:
TRANSFORMER CABINS WITH OR WITHOUT
BASEMENT.

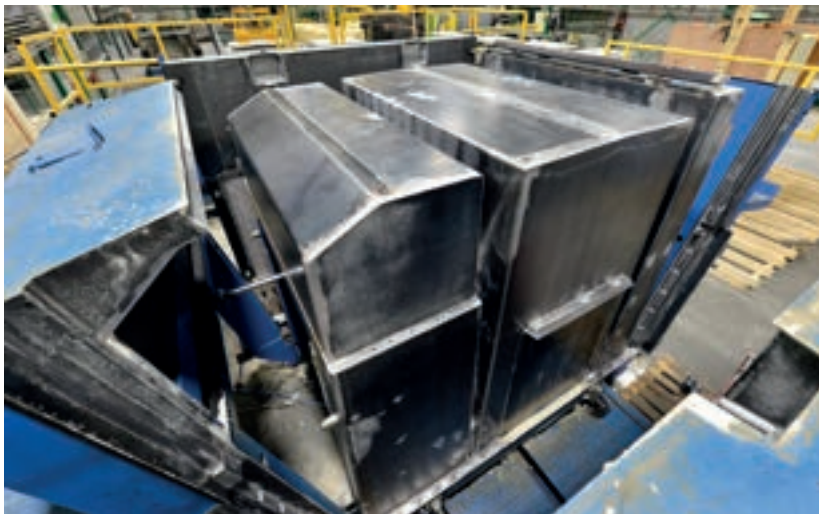


PRODUCT INFORMATION:
CELL MOULDS FOR PRISONS AND FITTING OF
HOUSING ELEMENTS.



PRECAST

PRODUCT INFORMATION:
MOULDS FOR NON-ACCESSIBLE
TRANSFORMER CABINS.



PRODUCT INFORMATION:
USE OF TRANSFORMER CABIN WITH
SOLAR PANELS.



PRECAST

WIND TURBINE ELEMENTS | Precast

PRODUCT INFORMATION:
PRODUCTION MOULDS FOR
WIND TURBINE MASTS.

With the theme of sustainability currently at the centre of attention, wind turbines are gaining more and more ground. Hendriks precon has responded to this with steel moulds for the concrete sections of wind turbine masts. Using hydraulically closing edges, the rings that make up the turbine mast can be made on location. Besides reducing the time needed for construction, this method also means significant material savings are achieved.



PRODUCT INFORMATION:

PRODUCTION IN FLAT AND ROUND SECTIONS
AND ASSEMBLY OF WIND TURBINE MAST ON SITE.



PRECAST

MISCELLANEOUS HANDLING | Precast

Due to the shape of the concrete product or the desired quality, it is sometimes necessary to handle the product after demolding. Moving, turning or tilting can be part of the production process. In combination with the existing factory equipment, there is always a solution to quickly and safely getting the product in the correct orientation or position.



PRODUCT INFORMATION:
SPREADER FRAME, WIDTH IS ADJUSTABLE.
TILTING FRAME FOR VARIOUS CISTERN ELEMENTS.
UNIVERSAL 90° TILTING FRAME.

PRODUCT INFORMATION:

MANIPULATOR FOR INSPECTION DOUBLE SIDED TABLES. AUTOMATIC CLOSING AND OPENING OF SIDE PANELS. MANIPULATOR FOR DEMOULDING AND MANEUVER CONCRETE ELEMENT.



PRECAST

MISCELLANEOUS MOULDS | Precast

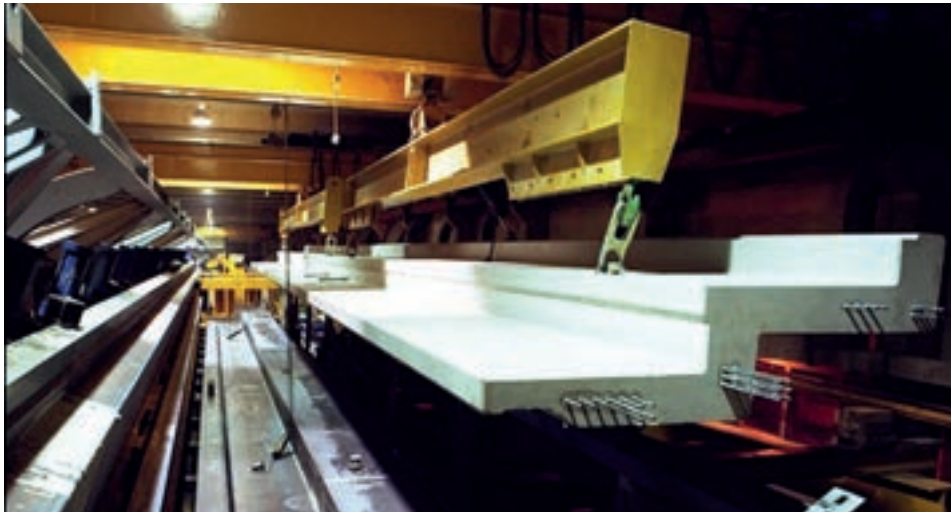
Not all concrete shapes can be grouped under headings, however thanks to more than 60 years' experience in mould construction, we have been able to bring many challenges to a satisfying conclusion.

PRODUCT INFORMATION:

PLAYGROUND SANDBOX ELEMENTS. DOUBLE CURVED TABLE, HYDRAULICALLY AND STEPLESS ADJUSTABLE. MOULD FOR CONCRETE ELEMENTS WITH A BRICK MOTIF, FOR THE RESTORATION OF THE QUAY WALL OF THE AMSTERDAM CANALS.



PRODUCT INFORMATION:
MOULDS FOR STAND ELEMENTS,
AJAX AMSTERDAM STADIUM.



PRECAST

PRODUCT INFORMATION:
DUBLIN, IRELAND, WILLIAM DARGAN BRIDGE,
GLUED SEGMENTAL ELEMENTS.



PRODUCT INFORMATION:

MACHINE FOR PRODUCTION AND TILTING CONCRETE CABLE TRAYS. QUICK-RELEASE MAGNETIC SHUTTER SYSTEM. MULTI-PART MOULD FOR BASE ELEMENTS (ELECTRIC VEHICLE CHARGING STATIONS).



PRODUCT INFORMATION:
MOULD FOR SHELL PARTS OF BEBO TUNNEL
(BEBO ARCH TUNNEL).

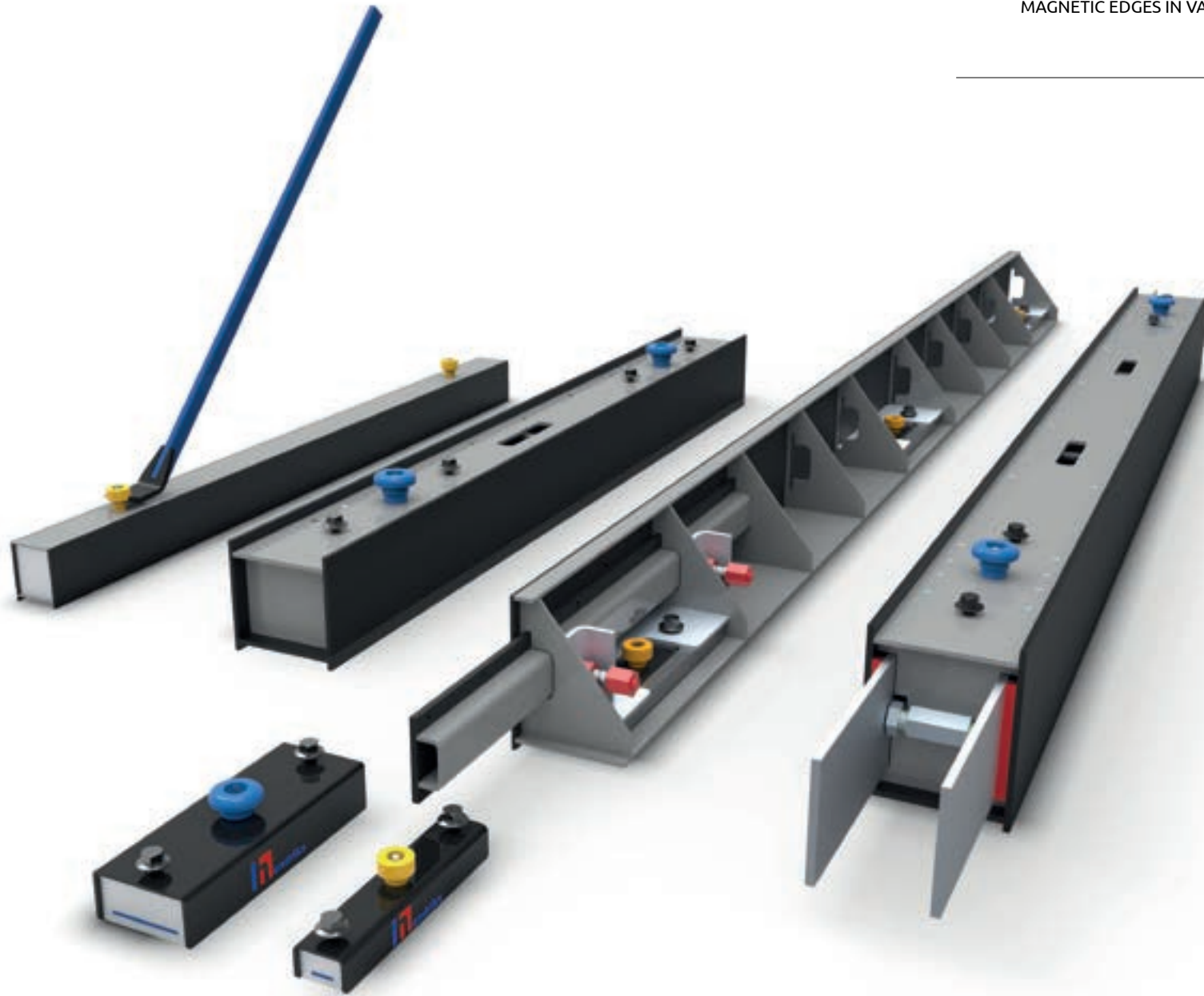


PRODUCT INFORMATION:
QUADRUPLE MOULDS FOR BENCH LEGS.

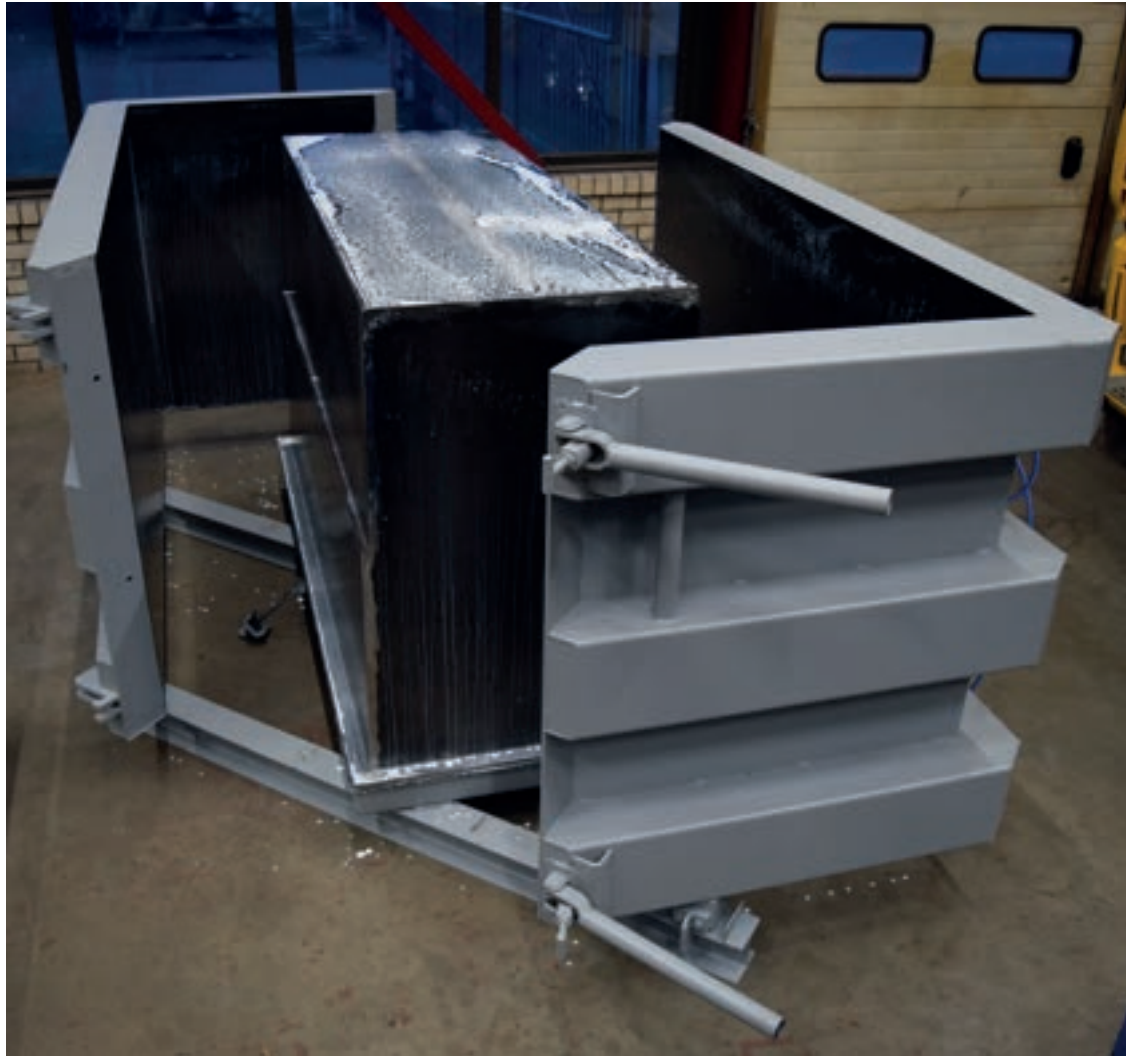


PRECAST

PRODUCT INFORMATION:
MAGNETIC EDGES IN VARIOUS VERSIONS.



PRODUCT INFORMATION:
BOLTLESS MOULD FOR BURIAL VAULTS AND
BATTERY MOULD FOR DIVIDING PANELS.



PRECAST

INDEX | In situ

Barriers & Footings	76
Bridge decks	80
Tunnels and walls	84
Quay walls	96
Special pillars	102
Wind turbine base	114
Miscellaneous	118

Smart construction methods and excellent finishing are essential in an increasingly mobile world in which urbanisation seems to go hand in hand with globalisation. Hendriks precon operates as inventive, sound and efficient partner for in situ projects for civil engineering, road construction and hydraulic engineering companies.

Whether this involves tunnels, viaducts, roads or quay walls, Hendriks precon offers the solution for in situ pouring of columns, pillars, quay walls or rail/road tunnels. Fast, efficient and extremely reliable. Hendriks uses its knowledge and experience not only for development, but also to engineer, implement and produce practical formwork solutions.

Solutions distinguished by their:

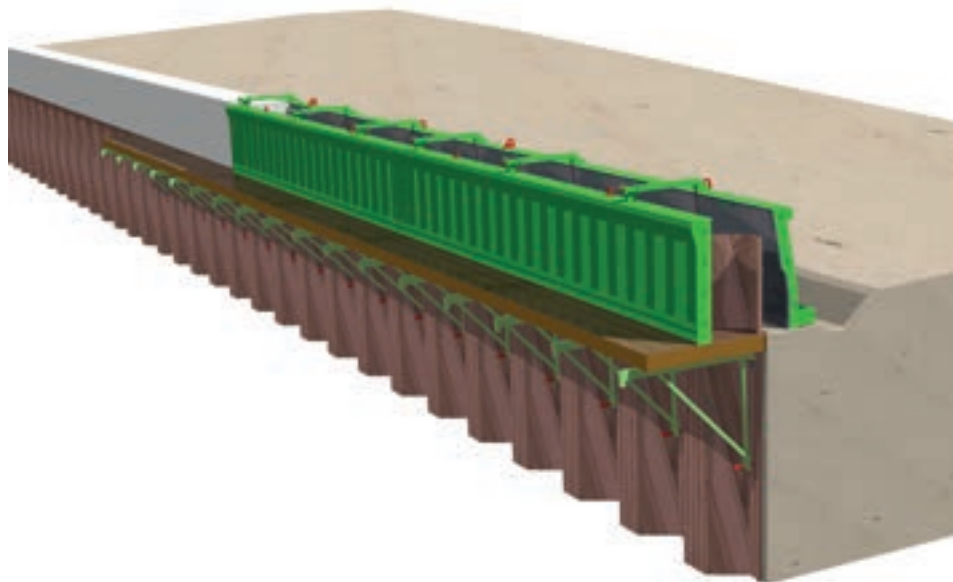
- High permissible concrete pressure
- Section lengths of up to 40 metres
- Cooling options for wall panels
- Delivery in virtually all shapes - from slanting retaining walls to gently sloping bridge deck constructions
- Delivery according to CE standards

BARRIERS & FOOTINGS | In situ

PRODUCT INFORMATION:
SHEET PILING BEAM ALONG THE SURINAME
RIVER IN SURINAME.

Higher traffic volumes and increased mobility result in the ongoing expansion of the road network. Concrete crash barriers offer an interesting, sustainable, quickly achievable and maintenance-free alternative to keep the road network safe. Hendriks precon supplies barrier formwork enabling the seamless in situ pouring of large sections of crash barriers. Forming takes place efficiently and ergonomically. It always results in a high quality concrete surface.

Formwork for footings, available in all dimensions and types. Inventive formwork for continuous foundation beams. Precise customisation is a feature that distinguishes all Hendriks precon formwork.



PRODUCT INFORMATION:
VARIOUS FOOTING FORMWORK AND KICKER
FORMWORK.



IN SITU

PRODUCT INFORMATION:
BARRIER FORMWORK AT COENTUNNEL AND
DOUBLE-DECK TUNNEL IN MAASTRICHT.



PRODUCT INFORMATION:
BARRIER POURED AT SCHIPHOL AIRPORT.



IN SITU

BRIDGE DECKS | In situ

PRODUCT INFORMATION:
AUKE VLEERSTRAAT FLYOVER FOR BICYCLES.

We offer a more efficient, faster and economic solution for bridge decks as an alternative to conventionally poured bridge decks. Customised formwork in which the form and type are an exact match for the often unique bridge and bridge deck designs.

For example: provisions can be poured in, safety is guaranteed by numerous safety provisions, and you reap the benefits of the user-friendly construction.



PRODUCT INFORMATION:
HIGHSPEED LINE AND OOSTERHEEM LINE.



IN SITU

PRODUCT INFORMATION:
FORMWORK FOR NIJMEGEN CITY BRIDGE.



PRODUCT INFORMATION:
MOODER MAAS AREA DEVELOPMENT,
NEW OOIJEN-WANSSUM CONNECTION.



IN SITU

TUNNELS & WALLS | In situ

PRODUCT INFORMATION:

BJØRVIKA TUNNEL IN OSLO AND SLOPING
RETAINING WALL IN LENT, 'ROOM FOR THE
RIVER WAAL'.

Access roads are essential for efficient and safe handling of traffic flows. Hendriks precon formwork ensures optimal production time.

Self-driving access formwork is hydraulically driven or winch operated. The formwork is height adjustable and is also available with landings and cleaning trolley. This enables you to avoid unnecessary crane expenses and associated man hours.

The Hendriks precon cut & cover tunnel formwork is also distinguished by its many significant time saving provisions, including the option to pour against fire resistant material, fixed at the formwork. As this concerns customised formwork, virtually anything is possible.

Immersed tunnels are a great example of the area in which civil engineering, road construction and hydraulic engineering converge. Examples include our formwork used in the construction of all large immersed tunnel projects. Our many years of knowledge and experience in this area also means that all our formwork offers time and safety advantages.



PRODUCT INFORMATION:

A73 TUNNEL ROERMOND AND BJØRVIKA TUNNEL
OSLO.



IN SITU

PRODUCT INFORMATION:
A4 TUNNEL DELFT, ROTTERDAM CENTRAL
STATION AND NIJVERDAL TUNNEL.



PRODUCT INFORMATION:
HYDRAULIC FORMWORK
FOR IMMERSION TUNNEL PROJECT
'BLANKENBURGVERBINDING' ROTTERDAM.



IN SITU

PRODUCT INFORMATION:
HYDRAULIC FORMWORK
FOR IMMERSION TUNNEL PROJECT
'BLANKENBURGVERBINDING' ROTTERDAM.



PRODUCT INFORMATION:

TUNNELING PROJECT 'DE GROENE BOOG'
ROTTERDAM. FAST BUILDING CYCLUS WITH
HYDRAULIC FORMWORKS FOR WALLS AND DECK.



IN SITU

PRODUCT INFORMATION:
HYDRAULIC TABLE FORMWORK FOR A2
MAASTRICHT, IMMERSED ELEMENT FOR
COENTUNNEL AND ROERMOND TUNNEL.



PRODUCT INFORMATION:
HYDRAULIC WALL FORMWORK IN MAASTRICHT
AND A73 IMMERSSED TUNNEL.

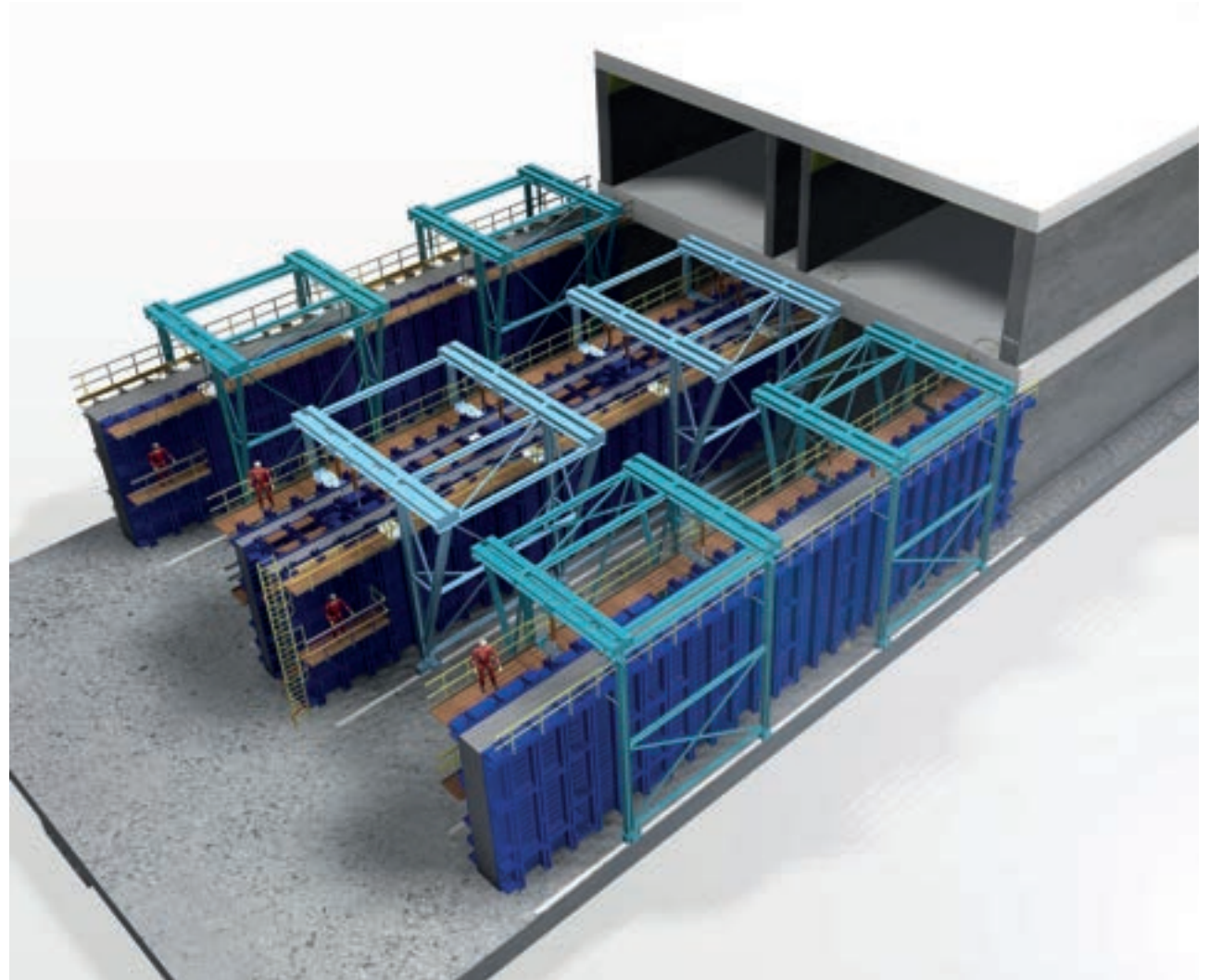


IN SITU

PRODUCT INFORMATION:
WALL FORMWORK FOR DOUBLE-DECK
TUNNEL IN MAASTRICHT.



PRODUCT INFORMATION:
WALL AND SLAB FORMWORK FOR TUNNEL
IN MAASTRICHT.

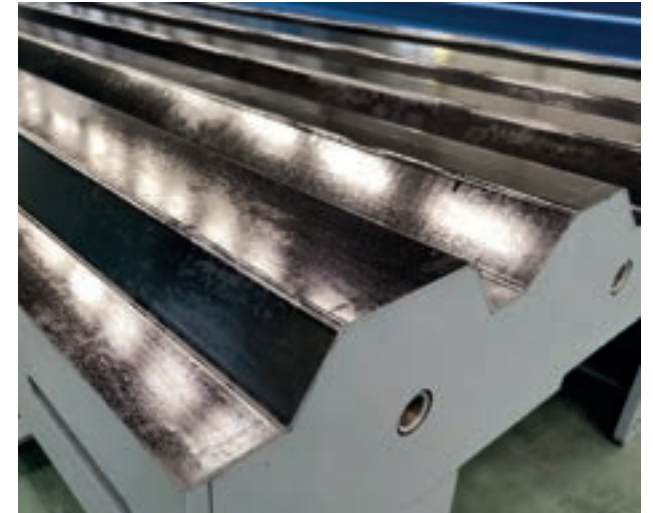


IN SITU



PRODUCT INFORMATION:

RIJNLAND ROUTE, CONNECTION OF KATWIJK
A44 TO LEIDEN A4.



IN SITU

QUAY WALLS | In situ

PRODUCT INFORMATION:
WET (STOCKHOLM) AND DRY (EEMSHAVEN)
POURED QUAY WALL.

For the construction of quay walls, Hendriks precon offers various solutions for pouring 'wet' or 'dry'. The formwork enables walls and floors to be poured simultaneously. The formwork carriage is mobile and can be moved hydraulically, with remote control if desired. It is also equipped with safety provisions such as wide, fixed steps, spacious platforms, lighting and tested landings. This enables high working speed to be combined with optimal safety. The formwork is supplied in accordance with CE standards.

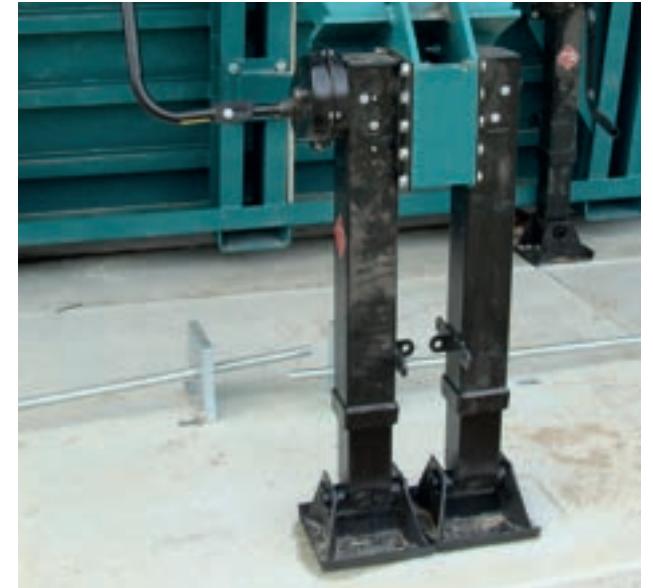


PRODUCT INFORMATION:
EUROMAX QUAY WALL ON MAASVLAKTE.



IN SITU

PRODUCT INFORMATION:
SLOPING QUAY WALL IN LENT, DOUBLE
MECHANICAL ADJUSTABLE LEGS.



PRODUCT INFORMATION:
QUAY WALL AT MAASVLAKTE 2 IN ROTTERDAM.



IN SITU



PRODUCT INFORMATION:
SCALDIAHAVEN QUAY WALL AND
VERREBROEKDOK ANTWERP.



IN SITU

SPECIAL PILLARS | In situ

PRODUCT INFORMATION:
OVAL, TAPERED AND RECTANGULAR
SHAPED COLUMNS.

New bridges, viaducts and other infrastructural works always result in new and innovative forms. Playful, sleek, minimalist or exuberant. Whether this involves curved or double curved areas, or sharp or rounded angles, we have all the necessary 'ingredients' available in house - 3D design knowledge, engineering capacity, production, delivery and, if necessary, fitting. In short, a partner who converts the vision of the designer or architect into reality.



PRODUCT INFORMATION:
DOUBLE LEGGED PILLAR WITH CURVED SURFACES
PROJECT 'WEERWATERBRUG' ALMERE.



IN SITU

PRODUCT INFORMATION:
PILLAR UTRECHTBOOG AND SPECIAL PILLAR
FORMWORK, 'SPACE FOR THE IJSSEDELTA'
IN KAMPEN.



PRODUCT INFORMATION:

A2 VINKEVEEN, OVERHOEKS PARKING GARAGE
AMSTERDAM, COLUMNS FOR RAIL EXPANSION IN
HOUTEN.



IN SITU

PRODUCT INFORMATION:
WAARDERPOLDER FLYOVER, HAARLEM.

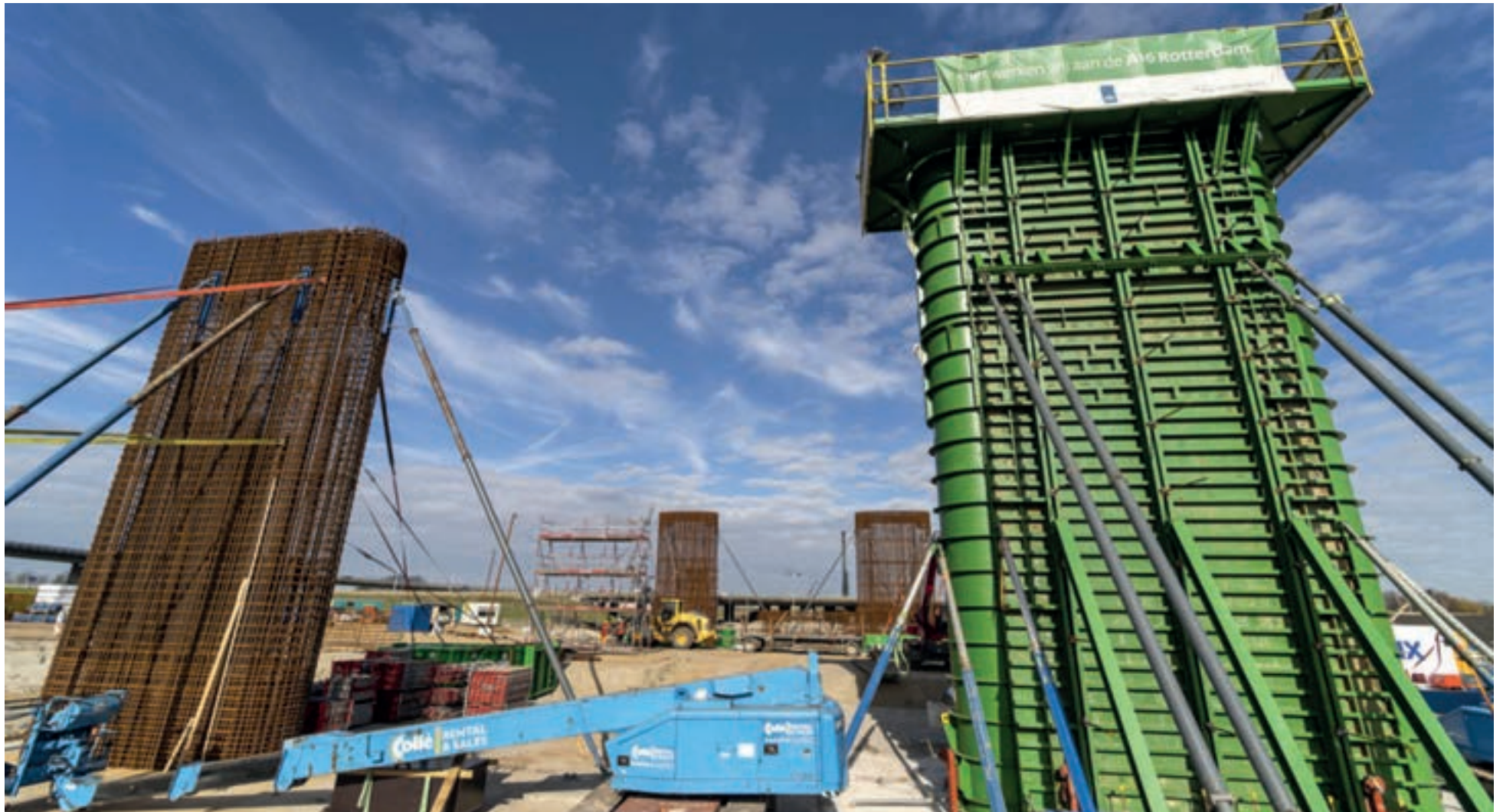


PRODUCT INFORMATION:
WAARDERPOLDER FLYOVER, HAARLEM, LENT
NEAR NIJMEGEN AND IRAQ.



IN SITU

PRODUCT INFORMATION:
OVAL SHAPED PILLAR, F
LY-OVER ROTTERDAM
'DE GROENE BOOG'.



PRODUCT INFORMATION:

OVAL SHAPED PILLAR,
FLY-OVER ROTTERDAM
'DE GROENE BOOG'.



IN SITU

PRODUCT INFORMATION:
STOPENDS HALF-ROUND FOR PILLARS
'BLANKENBURGTUNNEL'.



PRODUCT INFORMATION:

CONSTRUCTION SITE WITH FORMWORK
AND COMPLETED PILLARS, PROJECT
'BLANKENBURGTUNNEL'.



IN SITU



PRODUCT INFORMATION:
PILLARS THEEMSWEG ROTTERDAM.



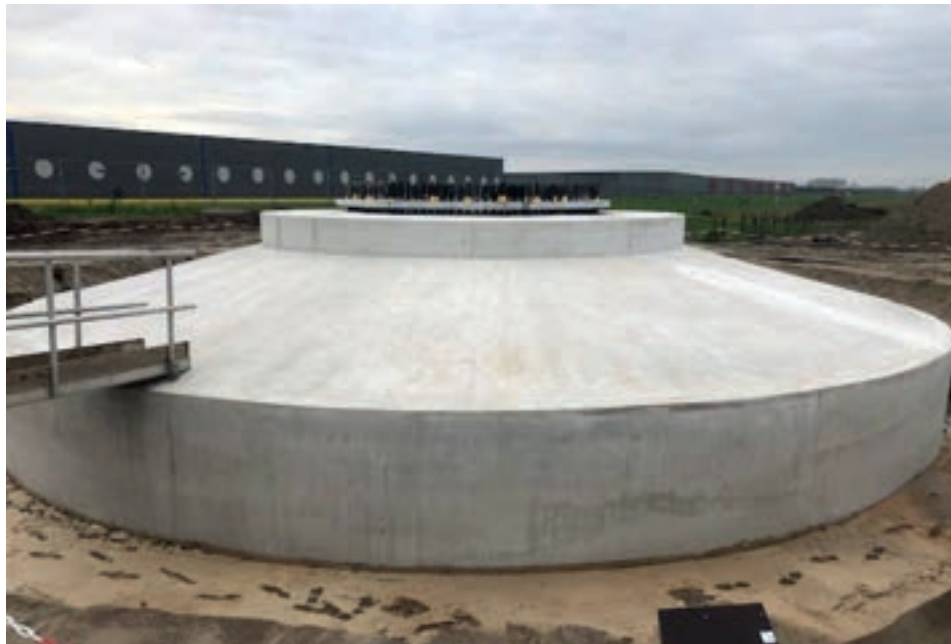
IN SITU

WIND TURBINE BASE | In situ

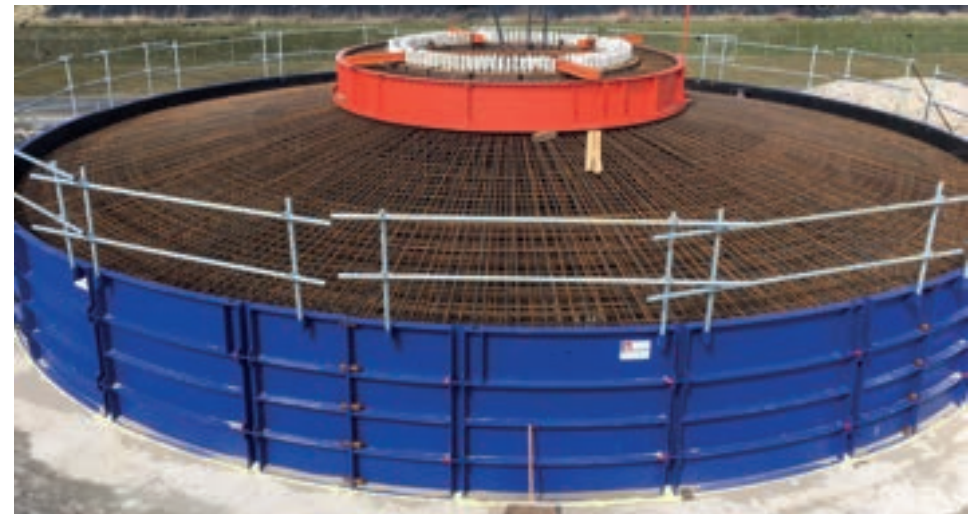
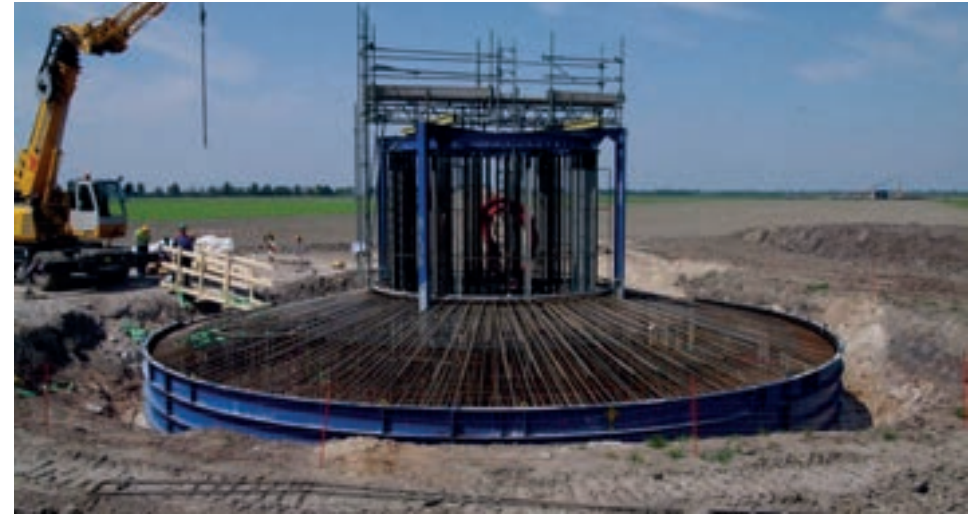
PRODUCT INFORMATION:
WIND TURBINE FOUNDATION WITH KICKER
FORMWORK IN ZEEWOLDE.

Wind turbines have become a fixed feature of our landscape. And we supply the resources to realise these too.

We supply formwork for wind turbine foundations in any required diameter. The formwork can be provided with an adjustable system for variable diameters.



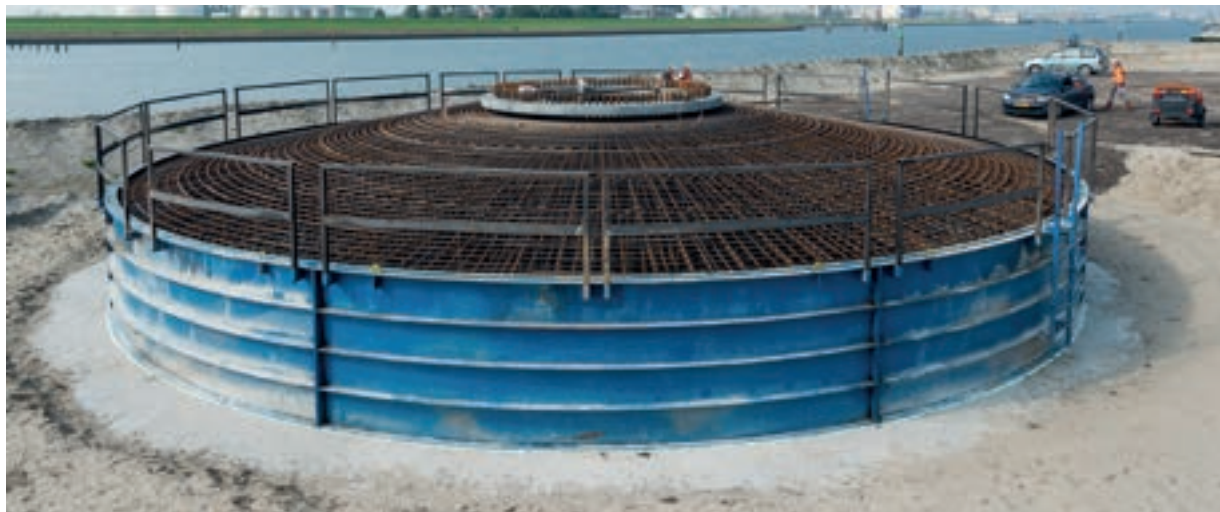
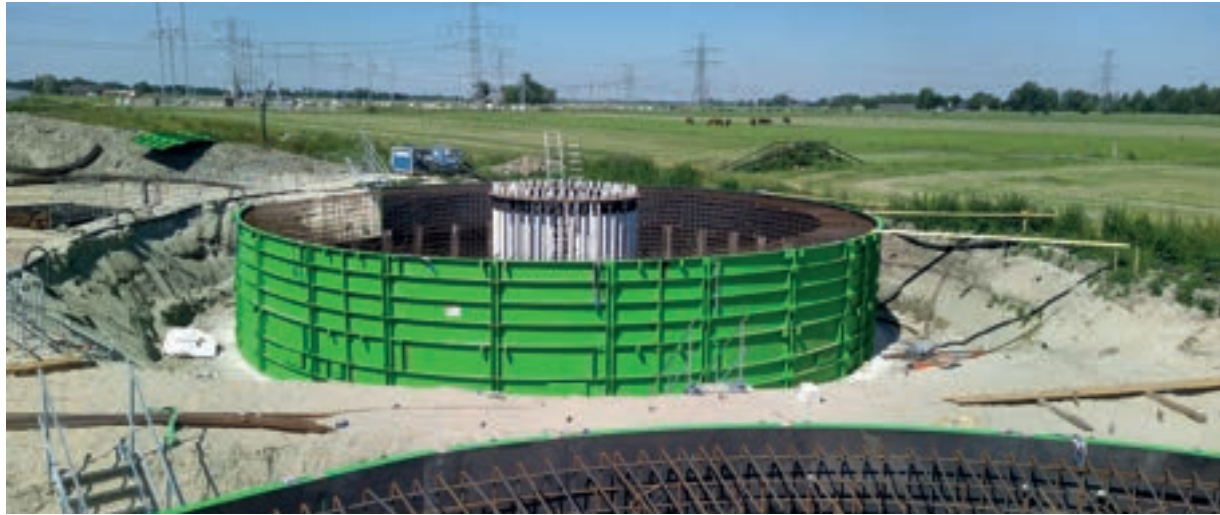
PRODUCT INFORMATION:
DIAMETER-ADJUSTABLE WIND TURBINE
FOUNDATION FORMWORK.



IN SITU



PRODUCT INFORMATION:
DIAMETER-ADJUSTABLE FORMWORKS
FOR WIND FARMS.



IN SITU

MISCELLANEOUS | In situ

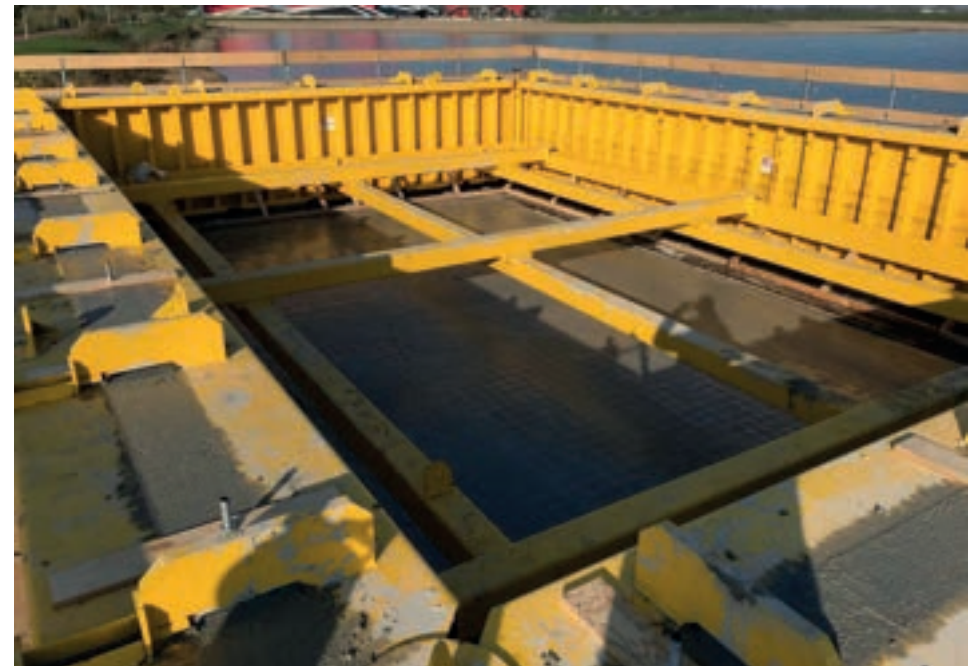
PRODUCT INFORMATION:
LOCK OPENING IN EEFDE, HYDRAULIC TILTING
FRAME, TILTING FRAME USING GRAVITY.

Other applications in civil engineering, road construction and hydraulic engineering? Technical challenges that demand special formwork? Hendriks precon has decades of experience in the design, development and realisation of formwork solutions - from formwork for ecological viaducts and windfarms, or other 'specials'. The formwork is engineered in house, making good use of the substantial steel formwork expertise that Hendriks precon has accrued. The formwork can be delivered fully-hydraulic and offers the ultimate in sustainability.



PRODUCT INFORMATION:

RESTORATION OF BRIDGE IN BELGIUM
ABUTMENT IN SAINT MARTIN
ELEMENTS FOR FLOATING VILLAS.



IN SITU

PRODUCT INFORMATION:
SCREED FOR RAILWAY 'BOTLEKBRUG'
TRANSPORT AND ON-SITE PARKING FRAMES.



PRODUCT INFORMATION:
TEMPORARY SUPPORT STRUCTURE FOR TOWER
BUILDING PROJECT 'CASANOVA' ROTTERDAM.



IN SITU







Inductorstraat 45
3903 KA Veenendaal
The Netherlands

P.O. Box 52
3900 AB Veenendaal
The Netherlands

info.hp@hendriks-groep.nl
+31 (0)318 566 555

www.hendriks-precon.com

Hendriks precon BV is a division
of Hendriks groep BV.

